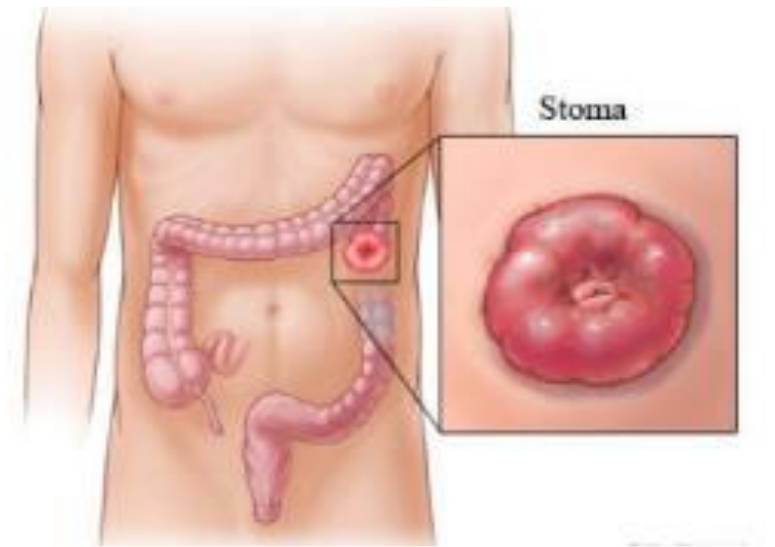


Advanced Stoma Management

Course Synopsis:

Participants will be able to acquire in-depth knowledge and skills required in caring for patients with stoma during the pre-operative and post-operative phase.



Course Information:

Time: 8.30am to 5.30pm

Venue: KTPH & YCH Learning Centre

(Exact venue will be announced in the confirmation email)

To register, please email Ms Edna Ho See Hui / Ms Lee Wen Yen at ho.see.hui@nhghealth.com.sg / lee.wen.yen@nhghealth.com.sg

Note: CPE points will only be awarded to participants who achieve minimum 75% class attendance and successfully complete the course (pass all assessments if applicable).

Course Objectives:

- Identify the different types of stoma, why they are formed and their normal function.
- Recognise stoma abnormalities.
- Describe the nursing role in caring for patients with a stoma.
- Demonstrate an understanding of the general dietary requirement for the three types of stoma.
- Demonstrate an understanding of products used in stoma care.
- Demonstrate competency in changing of stoma appliances.

Course Content:

- Anatomy and physiology of gastrointestinal tract.
- Complications associated with the large Intestine and its management.
- Type of operations.
- Stoma management.
- Type of stoma appliances and its uses.
- Managing common stoma related skin problems.
- Nurses' role in ostomy care.
- Lifestyle modification.
- Application of stoma appliance (Practicum session).